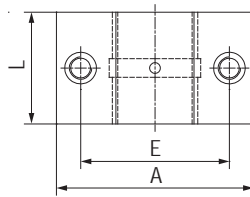
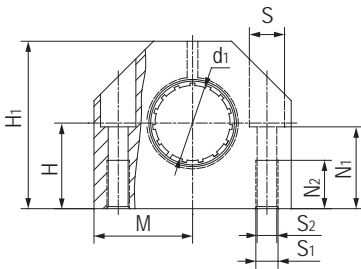


### LIN-12B 短型直线滑块轴承 Short linear pillow blocks



- 封闭式短型枕块设计
  - 装配LIN-12滑动膜
  - 阳极氧化铝合金适配器
  - 螺栓固定
  - 免维护、低噪音
  - 适用于污垢或灰尘环境
  - 使用温度-50℃/+90℃
- Closed and short block design
  - Assembled LIN-12 liners
  - Anodized aluminum adapter
  - Secured by bolts
  - Maintenance-free and low noise
  - Resistance to dirt and dust
  - Operation temperature -50℃/+90℃

### 标准规格 Standard specifications



产品编码 Part No.:

LIN-12B-12

轴承内径 Inner diameter

短型设计滑块 Short design block

LIN-12 标准滑动膜  
Standard liners LIN-12

轴 Shaft: h6-h9

产品编码 Part No.	d <sub>1</sub> [mm]	公差 Tolerance [mm]	H <sup>+0.01</sup> <sub>-0.014</sub> [mm]	H <sub>1</sub> [mm]	A [mm]	M [mm]	E ± 0.15 [mm]	E <sub>1</sub> ± 0.15 [mm]	S [mm]	S <sub>1</sub> [mm]	S <sub>2</sub> [mm]	N <sub>1</sub> [mm]	N <sub>2</sub> [mm]	L [mm]
LIN-12B-12	12	+0.030/+0.088	17	33	40	20	29	18	8	M5	4.3	16	11	28
LIN-12B-16	16	+0.030/+0.088	19	38	45	22.5	34	19	8	M5	4.3	18	11	30
LIN-12B-20	20	+0.030/+0.091	23	45	53	26.5	40	20	9.5	M6	5.3	22	13	30
LIN-12B-25	25	+0.030/+0.091	27	54	62	31	48	25.5	11	M8	6.6	26	18	40
LIN-12B-30	30	+0.030/+0.110	30	60	67	33.5	53	30.5	11	M8	6.6	29	18	50
LIN-12B-40	40	+0.030/+0.115	39	76	87	43.5	69	36	15	M10	8.4	38	22	60
LIN-12B-50	50	+0.030/+0.130	47	92	103	51.5	82	44	18	M12	10.5	46	26	70

产品编码 Part No.	轴径 Shaft [mm]	F max. [N] 最大动载荷 Dynamic Load P=5MPa	F max. [N] 最大静载荷 Static Load P=35MPa	重量 Weight [g]
LIN-12B-12	12	840	5880	78
LIN-12B-16	16	1200	8400	106
LIN-12B-20	20	1500	10500	132
LIN-12B-25	25	2500	17500	253
LIN-12B-30	30	3750	26250	374
LIN-12B-40	40	6000	42000	713
LIN-12B-50	50	8750	61250	1168